



**WORLD'S BEST
ALLOY BULLBARS**

**Strongest Built
Australian Made
Lifetime Warranty**

PN:EAIZ81SY



Fitting Guide & Owners Manual

ISUZU MU-X

1-2021 on

Winch compatible Big Tube Bar
VEHICLE FRONTAL PROTECTION SYSTEM (VFPS)
FOR AIR BAG & ADR COMPLIANT VEHICLES



Index

Pages 3-5

ECB's Benefits
Product Care

Pages 6-7

Stage 1 - Vehicle Testing and Preparation
Stage 2 - Top Grille Trim
Stage 3 - Remove Bumper
Stage 4 - Plastic Underbelly Guard
Stage 5 - Steel Underbelly Guard
Stage 6 - Bumper Reinforcement

Pages 8-9

Stage 7 - Bumper Stays
Stage 8 to 10 - Steel Mounting
Stage 11 - Install Winch (if fitting)
Stage 12 - Side Bumper Locators

Pages 10-11

Stage 13 - Bumper Trim
Stage 14 - Refit Bumper
Stage 15 - Relocate Sensors
Stage 16 - Vehicle Electrics
Stage 17 - ECB Indicator/ Park Lights
Stage 18 - Clip Lock Trim

Pages 12-13

Stage 19 - Install Protection Bar
Stage 20 - Inner Guard Refitment
Stage 21 - Headlight Guard Installation
Stage 22 - ECB Fog Lights
Stage 23 - Steel Underbelly Refit
Stage 24 - Plastic Underbelly Refit

Pages 14-15

Stage 25 - Test Electrical Systems
Final Checks
Installation Kit

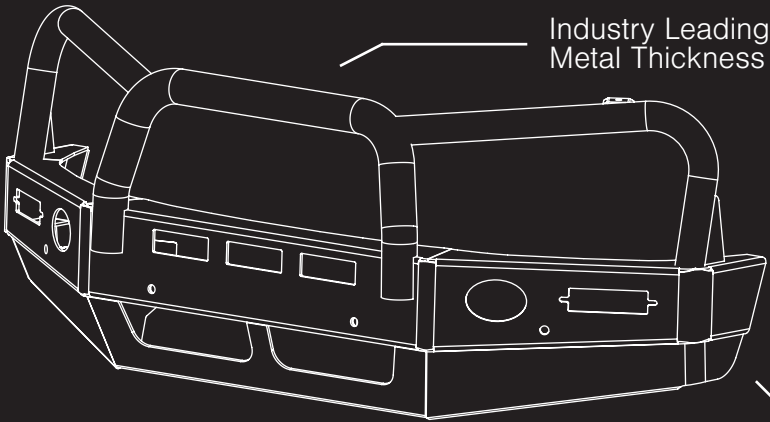
Pages 16-17

Finished Product
Warranty Registration

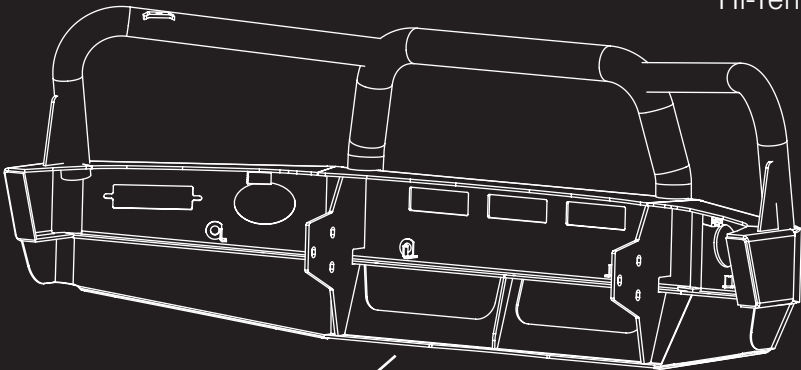
Pages 18-19

Notes

The Features of ECB



Industry Leading
Metal Thickness



6mm Thick
Hi-Tensile Alloy

Unmatched
Strength

Fully Welded
Construction

ECB's Benefits

Built to Perform - Not to a Price

ECB are proud to claim that their channels are not jigsaw puzzles that are bolted together, or even multiple sections welded together. Where any welding is required, it is done to the highest standards by qualified welders, not machines.

Anti-Corrosive Nature of Alloy

The composition of ECB's alloy has a very high resistance to corrosion. Rust not only looks unappealing but greatly reduces the strength of the metal. Rust can and will weaken the structural integrity of a steel bullbar effectively rendering it useless over time.

Australian Made

Established in 1971, we utilise decades of experience designing, engineering and building products in Australia to suit Australian conditions. We can ensure the best quality controls and help support the local economy and employ over 90 proud Australians.

Weight Saving Benefits

An ECB alloy bullbar is typically half the weight of a steel bullbar. Unnecessary suspension upgrades are not required. The reduced weight also contributes to increased fuel economy and less wear and tear on tyres, suspension and braking components.

Welds That Work

ECB uses only the strongest welds and welding techniques to ensure every product is as structurally sound as possible. MIG (Metal Inert Gas) welding techniques are employed ensuring the welds are as thick as the thickest section of alloy's being joined together.

Lifetime Warranty

ECB provide a lifetime warranty and consumer guarantee on all of our manufactured products. This guarantee highlights the confidence in our ability and provides complete peace of mind for your purchase for the lifetime you own your vehicle.

Product Care

Polished Products

Being a premium mirror polished finish, regular maintenance will be required to keep that iconic ECB shine. We recommend using our own brand of Aluminium Polish. This formula has been tried and tested and in our opinion is the world's best standard.

Directions: Apply a small quantity of Aluminium Polish to a clean soft cloth and rub the metal surface. The longer the rubbing the brighter the surface becomes. Wipe off Aluminium Polish with clean soft cloth. Also suitable for motorised buffing machines.

Note: There are more specific details on the polish bottle. Please read before use.

Powdercoated Products

Our powdercoated finishes are very low maintenance. Infact there is actually very little you will ever need to do for this product. Just clean it as you would your car and it will stay looking good as new.

ECB Aluminium Polish

When you're looking for that showroom finish look for your polished automotive products, you can depend on the no compromise quality of East Coast Bullbars Aluminium Polish. This specifically designed product is the best polish available and we guarantee that this \$#!+ works. Within our decades of manufacturing polished alloy products we have trialled a large range of different polishes on the market and believe without a doubt that nothing beats the finish quality of East Coast Bullbars Aluminium Polish.

East Coast Bullbars Aluminium Polish is excellent for use by hand and is ideal for polished bullbars, nudge bar and stainless steel products. This polish will clean, polish and protect your product from the elements whilst bringing your products back to that showroom finish look.



EAIZ81SY

Stage 1

- Test drive vehicle to ensure all driver assists are correctly working and to gauge effectiveness. Park on a flat level surface.
- Apply parking brake and lift bonnet.
- Unwrap ECB Protection bar and disconnect mounts. Discard bolts.
- Ensure these instructions are left with the vehicle owner and/or operator.



Stage 2

- Remove ten (10) clips from top plastic trim behind grille and remove.



Stage 3

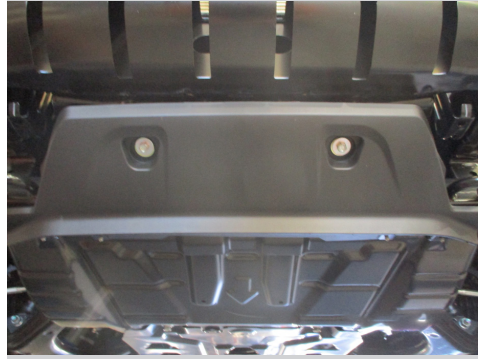
- Remove four (4) clips from top of bumper between headlights, one (1) clip from guard to bumper join (per/ side), four (4) clips from under side of bumper, one (1) 10mm head nut from guard liner to bumper (per/side).
- Disconnect fog lights from passenger side.
- Gently pull sides of bumper away from vehicle to release bumper side clips and remove bumper.



ISUZU MU-X 1-2021on

Stage 4

- Remove two (2) 12mm head bolts from front of plastic underbody guard
- Remove (2) two 14mm head bolts from rear of plastic underbody guard.
- Pull down firmly to remove guard.



Stage 5

- Loosen only front three (3) 14mm head bolts on front of under body guard and slide forward to remove.



Stage 6

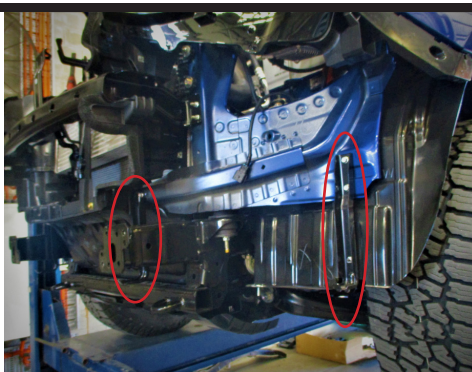
- Remove two (2) 14mm head bolts from the end of chassis rail (per/side).
- Remove bumper reinforcement.



EAIZ81SY

Stage 7

- Remove four (4) bumper stays from vehicle.
- Two (2) 10 mm head bolts from outer stays (per side) and one (1) 10mm head bolt from inner stay (per side).



Stage 8

- Fit steel winch mount onto chassis rails using M10 x 1.25 X 30 bolts in front holes.
- Place M10 x 1.25 x 100 in front of chassis holes.
- Using mount as a guide drill 10mm hole through chassis rail.



Stage 9

- Remove steel winch mount from chassis rails and enlarge inside holes in rail with step drill or similar to allow steel spacer tube to fit.

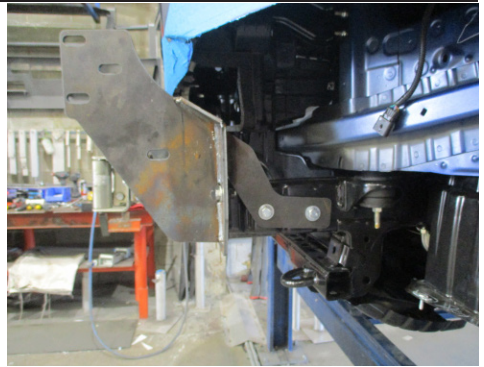
Blow filings clear and paint or rust proof all exposed metal



ISUZU MU-X 1-2021on

Stage 10

- Refit steel winch mount onto chassis rail using M10 X 1.25 X 35 bolts, spring washers and flat washers in front holes.
- Attach rear of mount using two (2) M10 x 1.25 x 100 bolts, flat washers, 40 x 40 washer plate, tube spacers, spring washers and nuts (per/side).
- Align and centralise winch cradle and tighten all bolts.



Stage 11

- Fit winch and fairlead to steel winch mount as per manufacturers instructions.



Stage 12

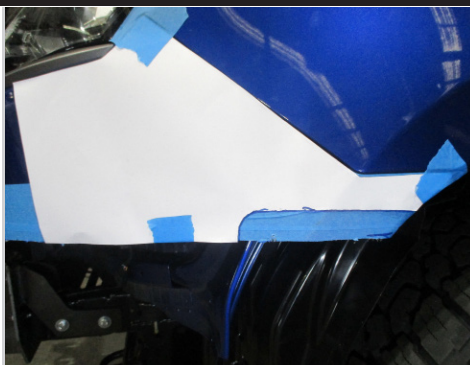
- Remove side bumper locators and trim as per photo.
- Refit with original equipment clips and screws.



EAIZ81SY

Stage 13

- Using paper masking tape, mask area to be cut to avoid damage.
- As printers vary, check measure template to ensure correct sizing.
- From this instruction, using sharp scissors, carefully cut out template.
- Mark and cut bumper using jigsaw, hack saw or similar.



CAUTION: Double check all marked lines before trimming.

CAUTION: This is a finished cut so it needs to be as neat as possible.

NOTE: Centre trim of bumper shown in photo in next step.

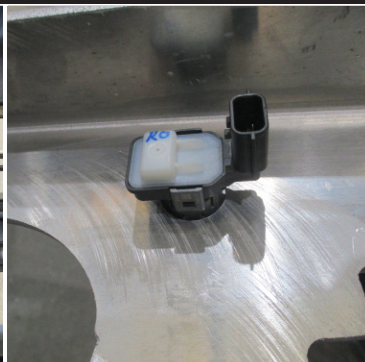
Stage 14

- Refit bumper using original equipment bolts and clips.
- Remove sensor wiring harness and zip tie to bottom leg of channel.
- Ensure harness is clear of sharp edges and moving parts.



Stage 15

- Remove sensors and sensor mounts from bumper.
- Relocate to protection bar.



ISUZU MU-X 1-2021on

Stage 16

- Splice ECB wiring harness into wiring harness behind headlight using cable locks (supplied).
- Splice ECB fog light harness into fog light wiring harness on vehicle using cable locks (supplied).
- Ensure harness is clear of sharp edges and moving parts.



CONNECTOR	PIN	COLOUR	USE
HEADLIGHT	9	PURPLE	PARK
INDICATOR	1	YELLOW	INDICATOR " + "
INDICATOR	2	BLACK	INDICATOR " - "

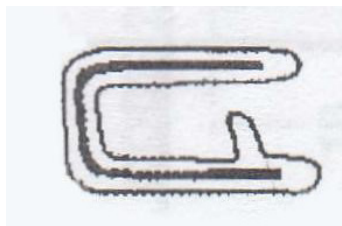
Stage 17

- Fit ECB LED indicator / park lights into protection bar as per instructions supplied with the LED indicator kit.
NOTE: Ensure park light is to top.



Stage 18

- Attach 6mm clip lock trim (supplied) to top of ECB protection bar. NOTE: Trim off lower edge on an angle so trim will sit flush with end of protection bar.



EAIZ81SY

Stage 19

- Fit protection bar onto steel winch mount using four (4) M12 x 1.25 x 40 bolts, flat washers, spring washers and nuts (per/side).
- Align and tighten all bolts.



Stage 20

- Mark and trim guard liner to fit neatly around lower headlight panel.
- Using lower bolt hole in lower headlight panel drill a mark hole in guard liner.
- Pull guard liner back and drill hole out to 6mm.
- Using 8mm spacer washer between Inner guard and lower headlight panel, fit M6 x 50 bolt, flat washer from rear side of panels. Firmly tighten only. Install one M6 nyloc nut to front side of bolt as locking nut.



Stage 21

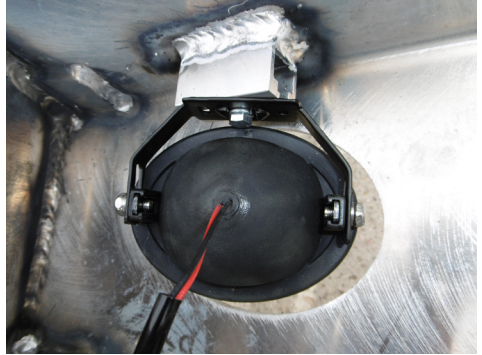
- Fit Side Underbelly guard onto bottom leg of protection bar using three (3) M6 x 25 bolts, flat washers and nyloc nuts (per/side).



ISUZU MU-X 1-2021on

Stage 22

- Attach ECB fog lights to protection bar. Place M6 x 20 bolts, spring washers (supplied) through light mount from inside and attach nut to top. Slide assembly into light mount in Protection bar and centralize light to hole. TIGHTEN FIRM ONLY.
- Install fog light surrounds (supplied) to fog light openings and winch openings. Large side of surround to inside of opening on lights and to rounded side of winch openings.



Stage 23

- Refit steel under body guard using original equipment bolts.



Stage 24

- Refit plastic under body guard using original equipment bolts.



Stage 25

- Test all electrical equipment for correct operation.

Final Checks

Ensure Number Plate is Clearly Visible

Note: When fitting/refitting the licence plate to the vehicle, ensure there is no obstruction to licence plate vision in accordance with local authorities. If required relocate licence plate to an alternate location.

Further VFPS Notes

1. Do not attach VFPS to the vehicle using anchorages not intended for this purpose (e.g. engine mounting bolts).
2. Do not use this product for any vehicle make or model, other than those specified by the VFPS manufacturer.
3. Do not remove the plaque or label from the VFPS.
4. Do not modify the structure of the VFPS in any way.
5. No accessory or fitment should project forward of the VFPS forward profile.
6. **Ensure these instructions are left with the vehicle owner and/or operator.**

Important Information

Periodically check bolts and nuts for correct tightness, especially if traveling on rough roads.

Installation Kit

Installation Kit

1 - Steel winch mounting bracket	2 - M8 spring washers
2 - Side underbelly guards	2 - M8 nuts
1 - Control box mount	2 - M6 x 50mm Bolts
1 - Motor control box mount	6 - M6 x 25mm Bolts
4 - 10Nb x 56mm Tube spacers	2 - M6 x 20mm Bolts
4 - 40 x 40 x 3mm Washer plates	12 - M6 flat washers
2 - 26 x 8 x 8mm Alloy washers	2 - M6 spring washers
2 - large worm drive hose clamps	8 - M6 nyloc nuts
8 - M12 x 1.25 x 40mm Bolts	2 - M6 nuts
16 - M12 Flat washers	1 - Indicator/ park kit
8 - M12 Spring washers	1 - Fog light kit
8 - M12 x 1.25 Nuts	10 - Cable locks
4 - M10 x 1.25 x 100mm Bolts	4 - Fog light trims
4 - M10 x 1.25 x 35mm Bolts	6 - 200mm Length single core wire
12 - M10 Flat washers	12 - Solder joiners
8 - M10 Spring washers	2 - 200mm Length 10mm convoluted tube
4 - M10 X 1.25 Nuts	10 - 150mm Cable ties
2 - M8 x 35 Bolts	1 - 2600mm Length 6mm clip lock trim
4 - M8 Flat washers	1 - 600mm Length 6mm clip lock trim

Finished Product



Warranty Registration

Contact Details

Name: _____

Address: _____

Product: _____

Email: _____

Phone: _____

Work Order Number: _____

You can find this on the silver label
of your ECB product.

By submitting this registration you automatically subscribe to ECB's mail outs.
You can unsubscribe at any time.

Register Online

For online registration please go online to www.ecb.com.au/warranty-registration
If you have any questions please contact our national office on 1800 069 145 or
www.ecb.com.au.

Or Post To:

PO Box 122, Margate, QLD 4019

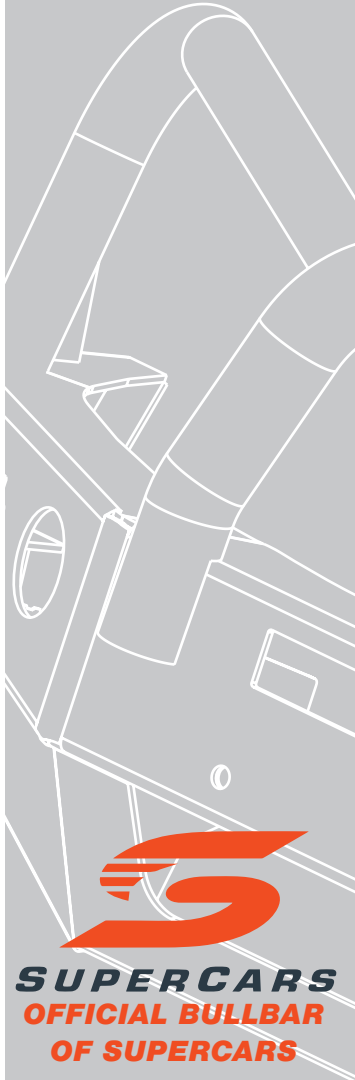


PN: EAIZ81SY

**Please post to: PO Box 122,
Margate QLD 4019**

[illegible]

REPLACES: N/A
REVISED: 04.01.22



1800 069 145
www.ecb.com.au

Strongest Built Australian Made Lifetime Warranty

29 Snook St, Clontarf QLD 4019
PO Box 122, Margate QLD 4019